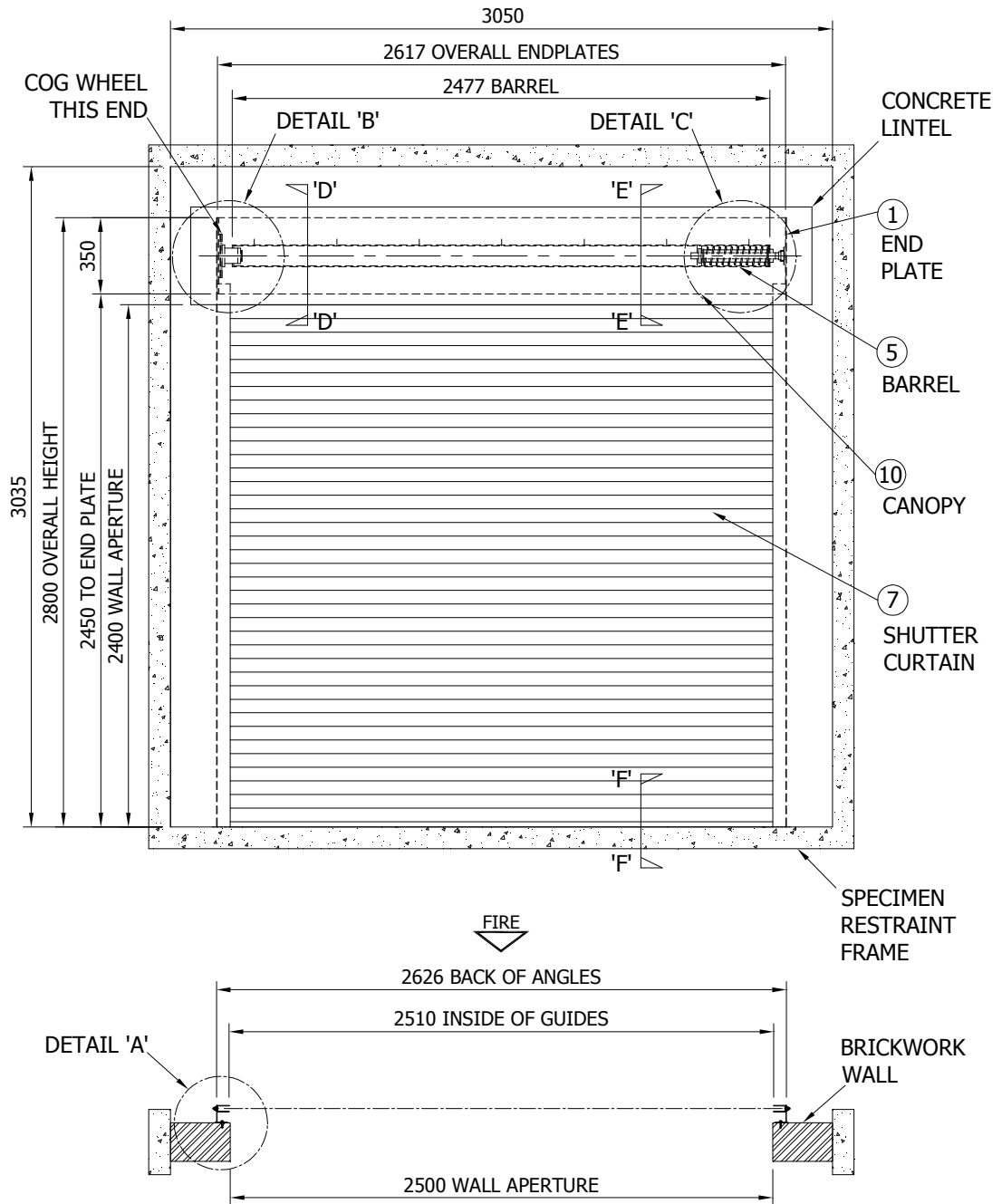


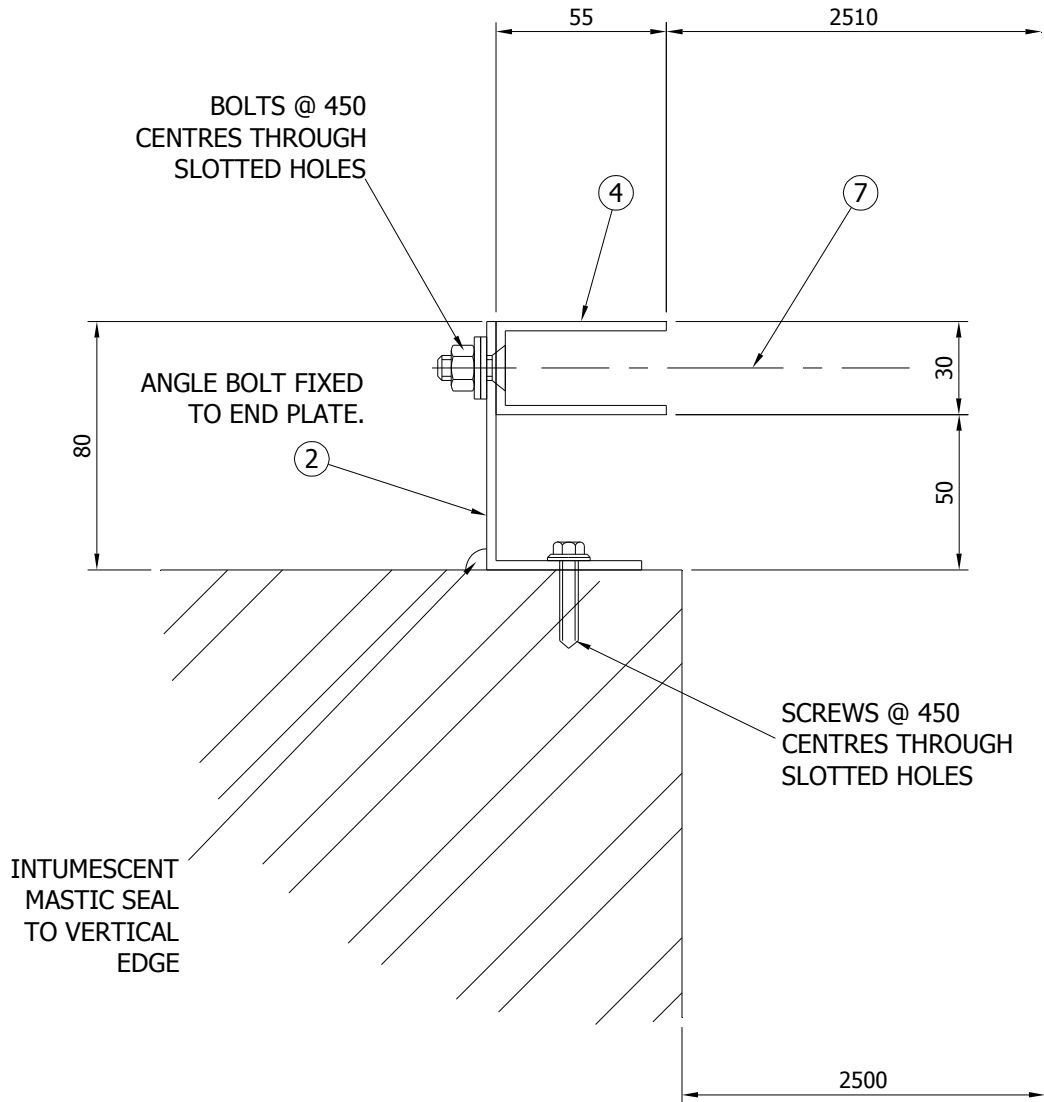
Test Specimen

Figure 1- Elevation of unexposed face



Do not scale. All dimensions are in mm

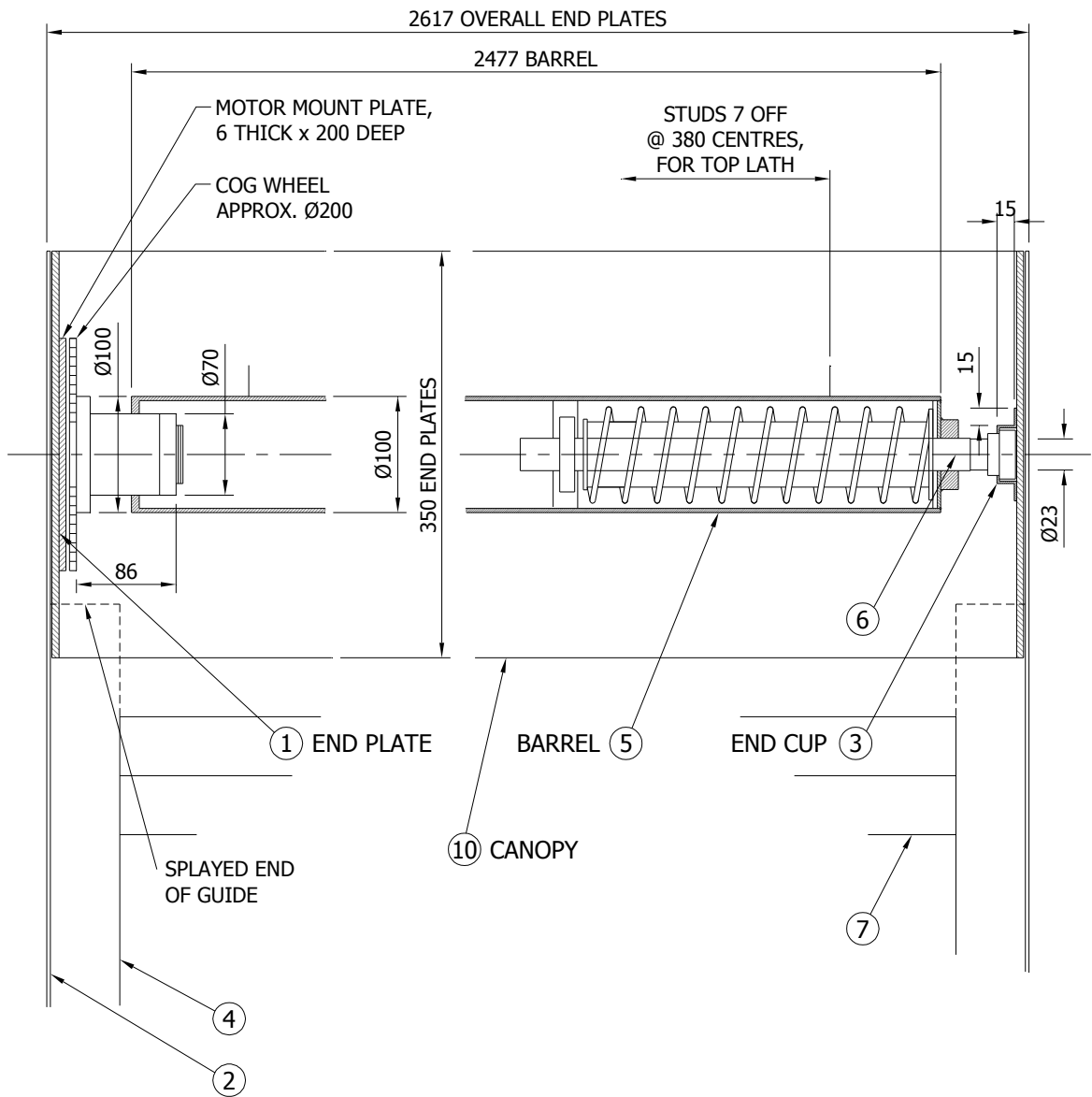
Figure 2 – Horizontal section, Detail 'A'



DETAIL 'A' (SEE FIGURE 1)

Do not scale. All dimensions are in mm

Figure 3 – Horizontal sections, Details 'B' and 'C'

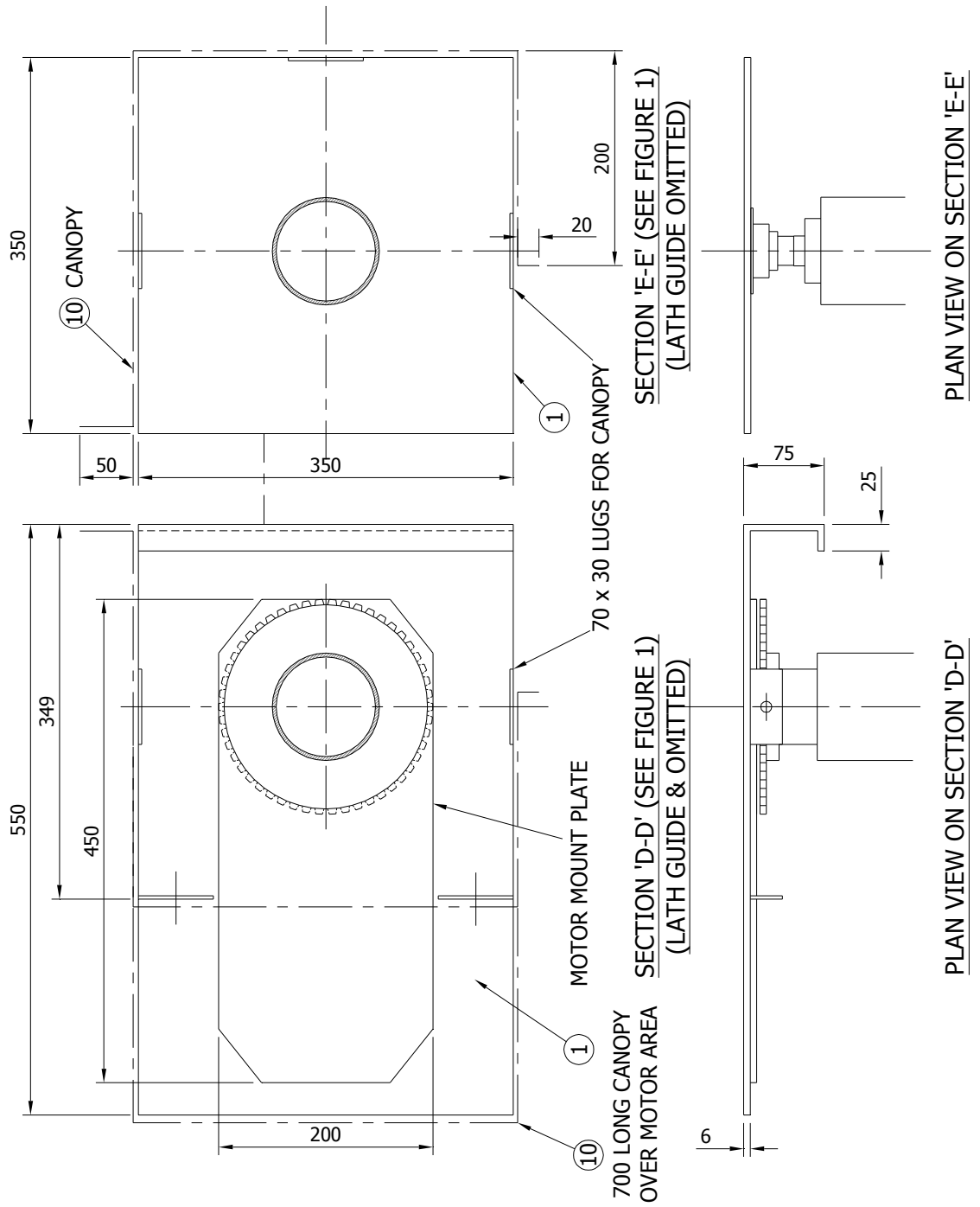


DETAIL 'B' (SEE FIGURE 1)

DETAIL 'C' (SEE FIGURE 1)

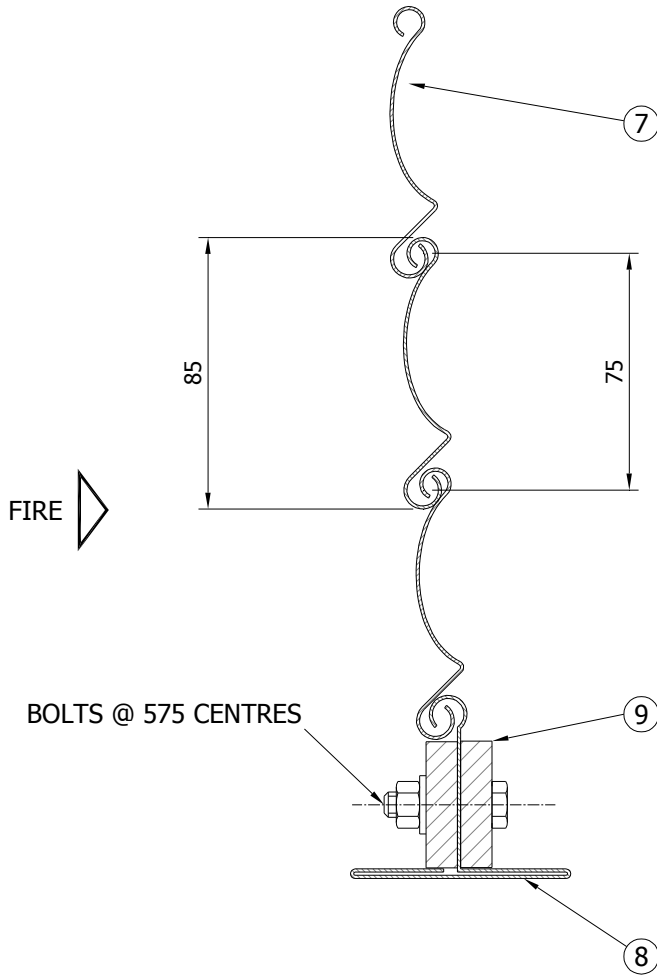
Do not scale. All dimensions are in mm

Figure 4 – Vertical sections 'D-D' and 'E-E' with plan views



Do not scale. All dimensions are in mm

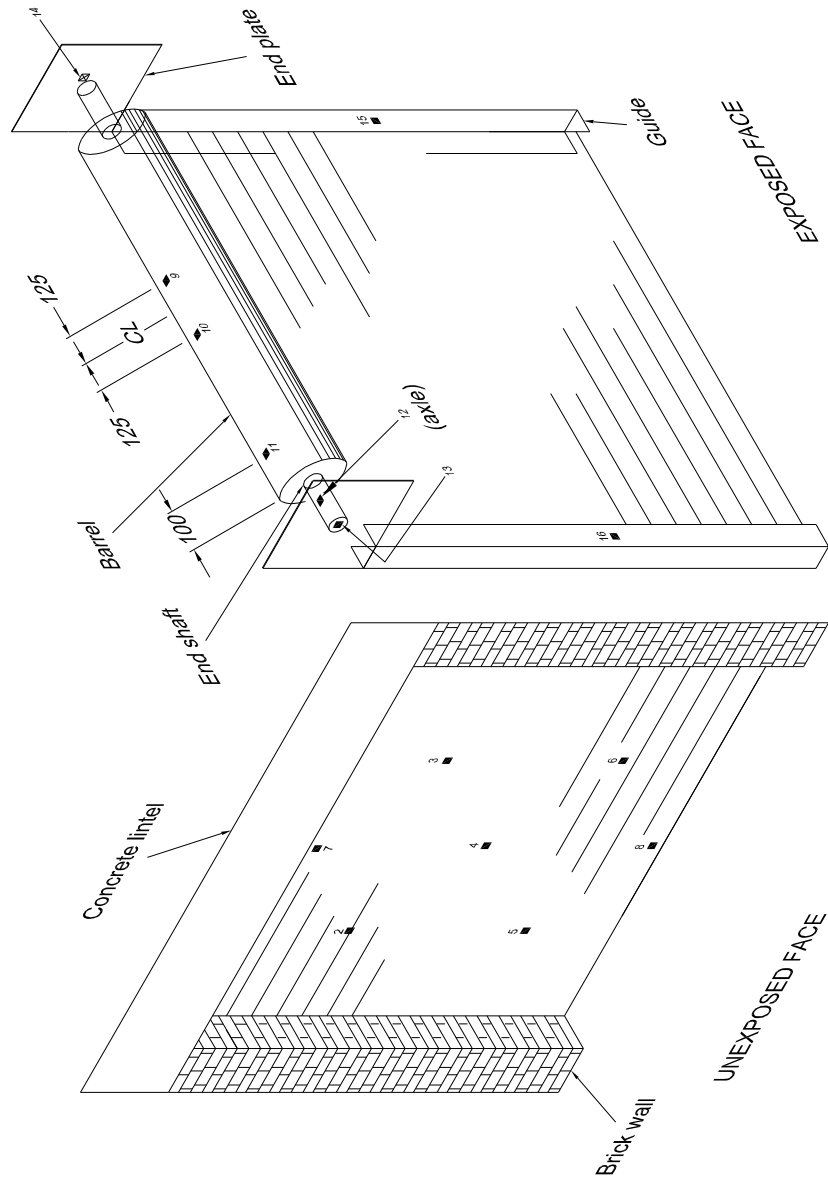
Figure 5 – Vertical section 'F-F'



SECTION 'F-F' (SEE FIGURE 1)

Do not scale. All dimensions are in mm

Figure 6 – Positions of thermocouples



Do not scale. All dimensions are in mm

Schedule of Components

(Refer to Figures 1 to 5)
(All values are nominal unless stated otherwise)
(All other details are as stated by the sponsor)

<u>Item</u>	<u>Description</u>
1. End Plates	
Material	: Mild steel plate
Thickness	: 6 mm
Overall sizes	: 350 mm x 350 mm and 350 mm x 550 mm)
Fixing	
i. method	: Dome head bolts and nuts with steel washers to the guide angles through round holes. End plate provided with flat plates at the top, bottom and side for fixing to the canopy
ii. bolt size / number off	: 8 mm diameter, 3 No.
iii. bolt centres on guide angle	: 125 mm
2. Guide Angles	
Material	: Mild steel angle
Thickness	: 3 mm
Size	: 80 mm x 50 mm x 2800 mm high
Fixing	
i. method	: Steel screws with steel and plastics washers to the brickwork wall through slotted holes in the angle apart from the bottom hole, which was round.
ii. sizes	: 6 mm diameter through 40 mm long slotted holes
iii. centres	: Nominally 450 mm with the first hole 50 mm up from the bottom and the last hole 50 mm down from the top
3. Shaft Support Cup	
Material	: Profiled mild steel section
Overall size	: 15 mm wide
Fixing	: Bolted to end plates
4. Curtain Guides	
Material	: Mild steel channels with the top end bell mouthed and the bottom end blanked off
Thickness	: 3 mm
Size of each channel	: 55 mm x 30 mm
Fixing	
i. method	: The curtain guide was fixed to the guide angle with countersunk head steel bolts and nuts with steel and plastics washers
ii. sizes	: 8 mm diameter bolts through 40 mm long slotted holes
iii. centres	: 6 No. at nominally 450 mm with the first hole 75 mm up from the bottom and the last hole 75 mm down from the top
5. Barrel	
Material	: Mild steel tube with counter balance spring
Thickness	: 3.6 mm
Size	: 100 mm diameter x 2477 mm long
6. Shafts	

Material : Mild steel
Size : 23 mm diameter
Fixing method : With shaft support cups at one end triangular bearing at the other

7. Shutter Curtain

Material : Galvanised mild steel curved laths
Thickness : 0.9 mm
Size : 75 mm (85 mm overall) x 2610 mm to outside of end locks
Number off laths : 36
Fixing
i. method : With nuts onto threaded studs on barrel. Alternate laths fitted with pressed mild steel end locks. Each lath was interlocked to the adjacent lath.
ii. fixings : 6 mm diameter
iii. centres : 7 No. at 380 mm centres

8. Bottom Lath

Material : Galvanised mild steel 'T' section
Lath thickness : 1.6 mm
Lath size : 55 mm deep

9. Drop Bars

Material : Mild steel bar
Sizes : 40 mm x 10 mm thick x 2450 mm long
Fixing
i. method : Steel bolts and nuts with steel washers
ii. fixings : 8 mm diameter
iii. centres : 5 No. at 575 mm centres

10. Canopy

Material : Galvanised mild steel
Thickness : 0.9 mm
Size : 350 mm x 350 mm x 2605 mm long including a 300 mm long end section with a 700 mm long x 350 mm deep x 300 mm wide section to cover the motor area (motor not fitted)
Fixing
i. method : Steel screws to concrete lintel through slotted holes in the canopy. Steel nuts and bolts to the flats on the end plates. Canopy fitted in two lengths fixed together with steel rivets, 4 No. per long side and 3 No. to short side
ii. fixing sizes : 6 mm diameter bolts through 40 mm long slotted holes